

Million SoUL Program

Kusalgarh Block, Banswara, Rajasthan

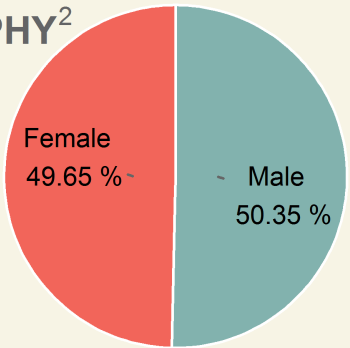
Students Benefited 12,400 **Saturation¹ 57.46%**

Funded by	Ministry of New and Renewable Energy
Institutional Partner	Sir Dorabji Tata Trust
Kits supplied by	Gramin Vikas Trust
Lamps assembled at	M/s. Sirius Solar Energy Systems Pvt Ltd.
Lamps assembled at	Near Petrol Pump, Kushalgarh, Banswara-327001, Rajasthan

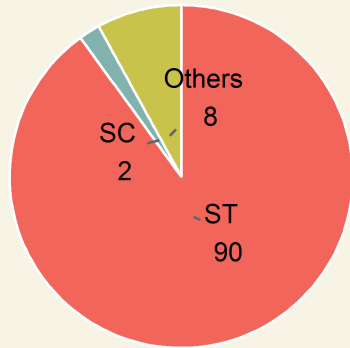


Area	Population	Rural Population	Villages	Schools
649.24 sq.km	3,79,232	97.19%	213	455

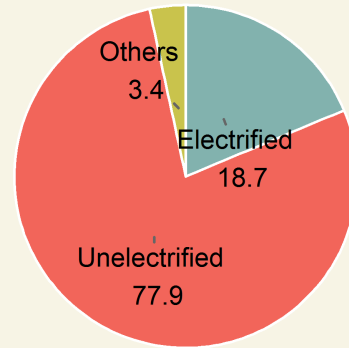
DEMOGRAPHY²



Gender

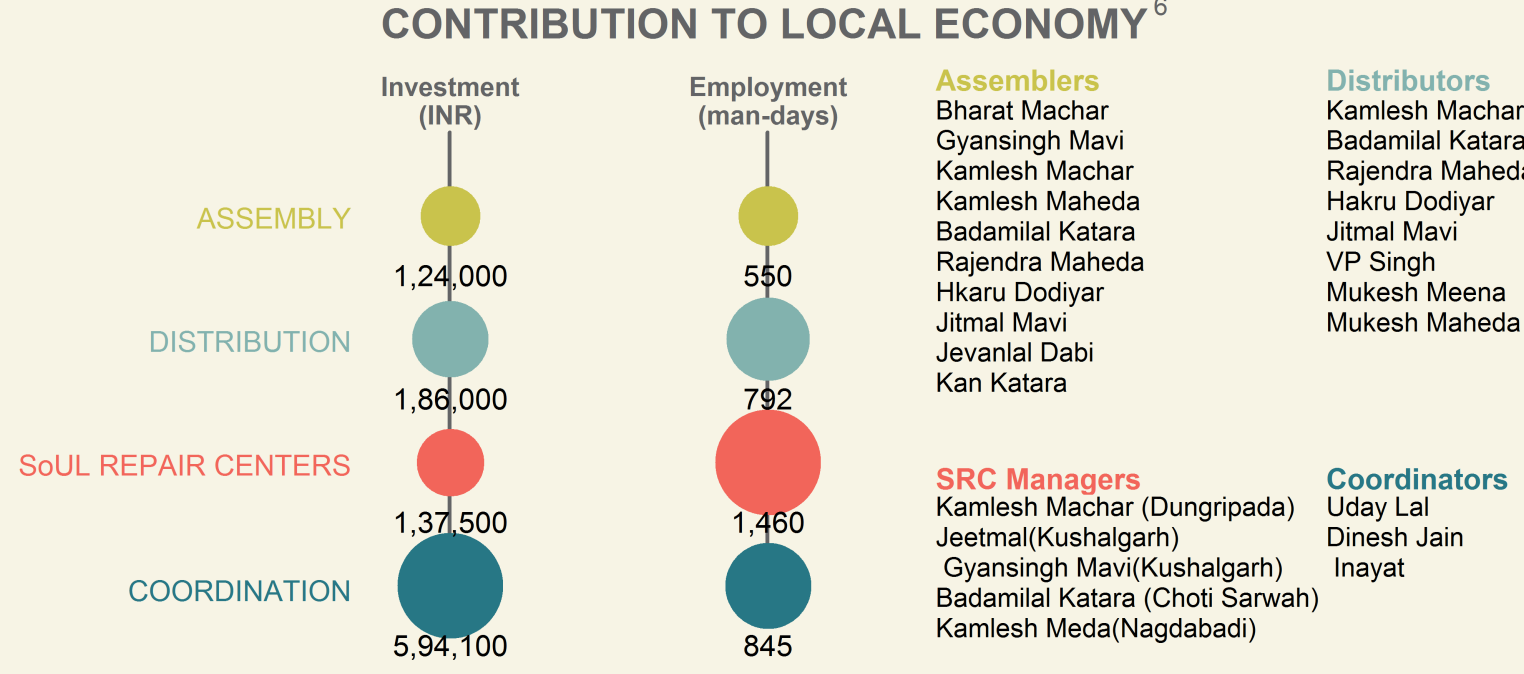
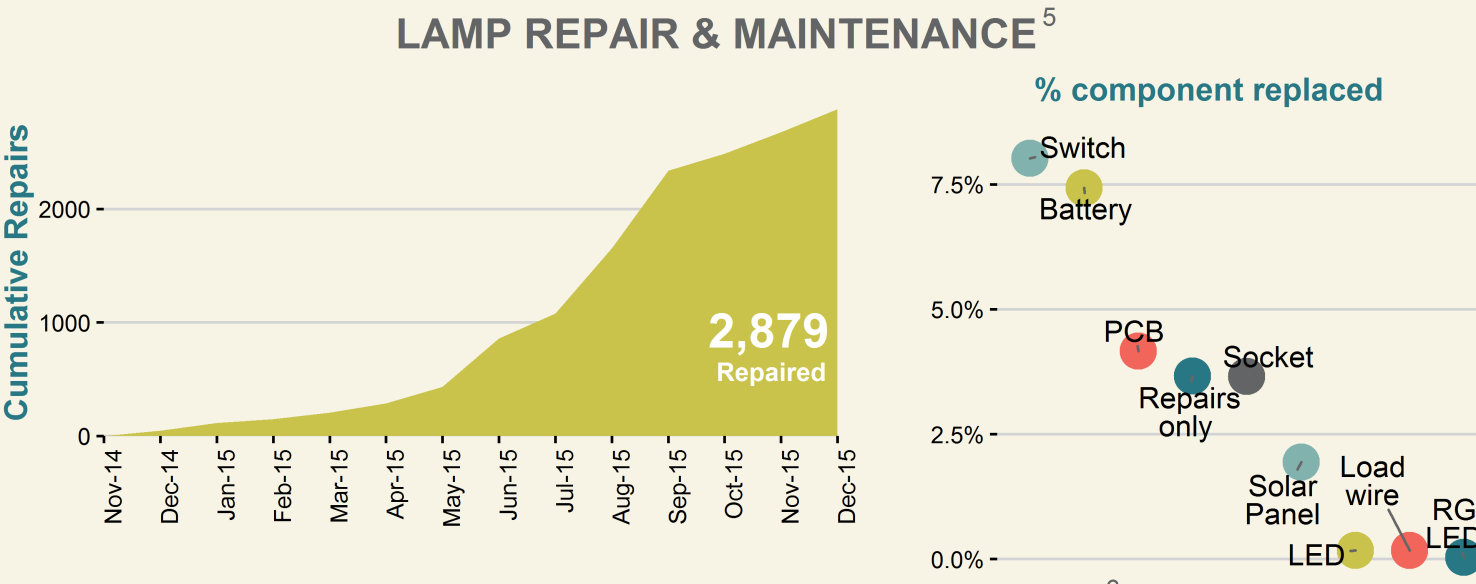
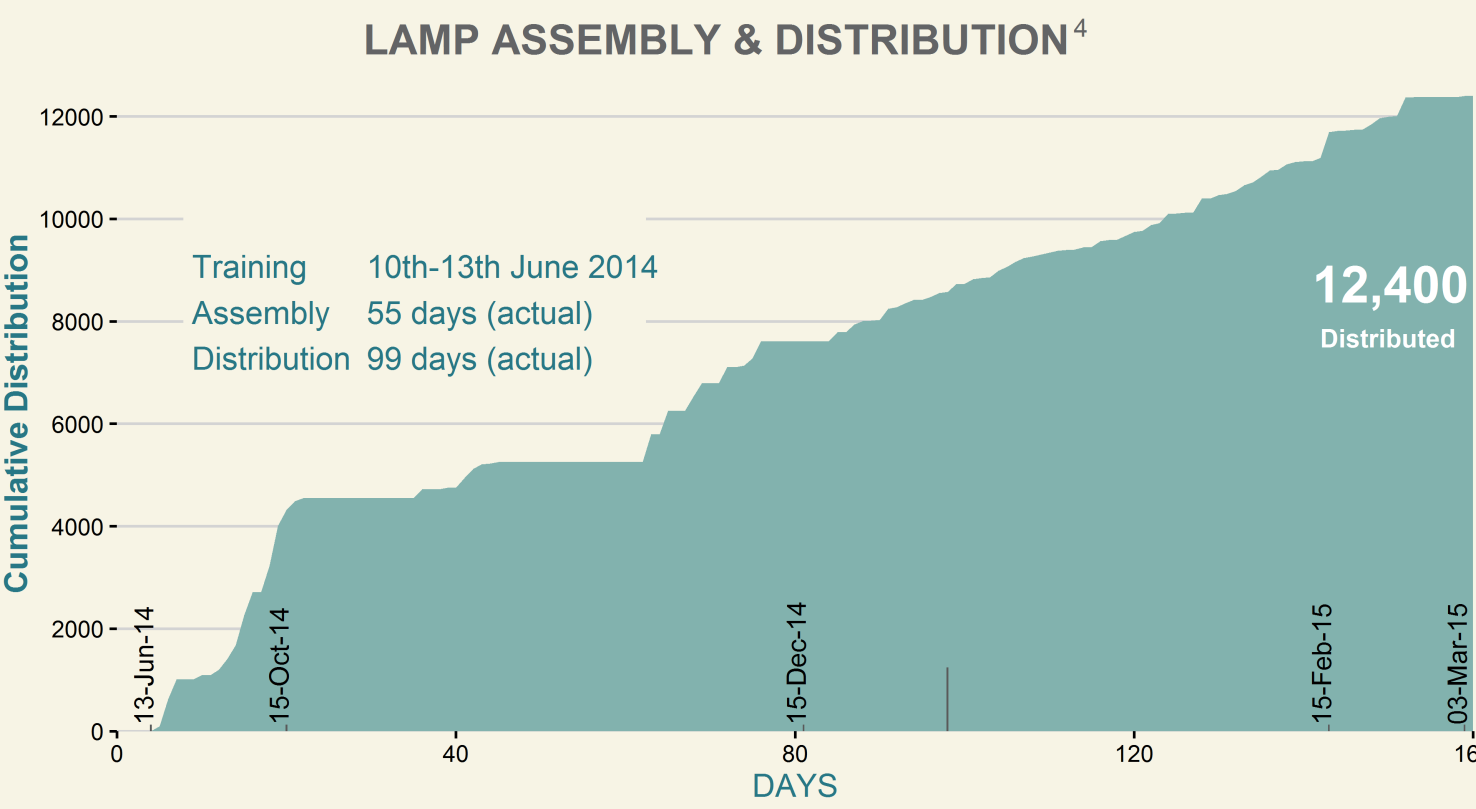
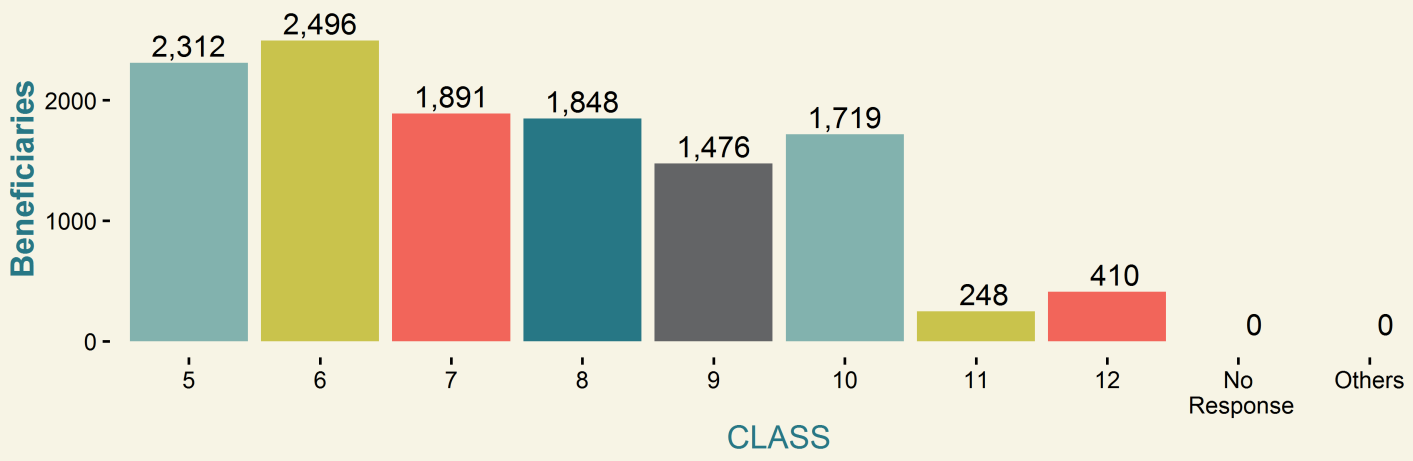
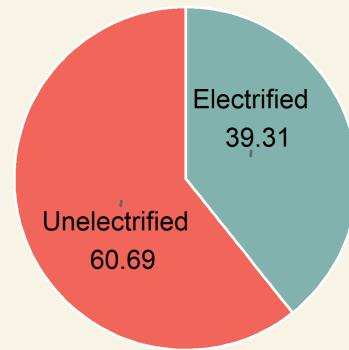
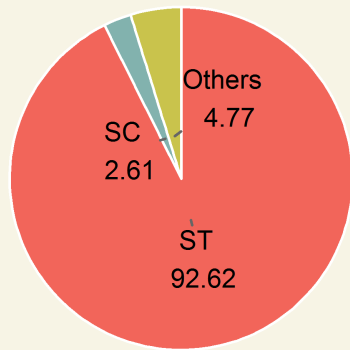
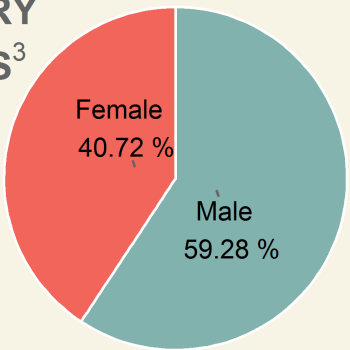


Category



Household Electrification

BENEFICIARY STATISTICS³



1. Saturation is the percentage of the block's rural school enrolment (5th-12th) benefited. (Enrolment data source: NUEPA)
2. Demography and other block details are obtained from Census of India 2011.
3. Beneficiaries details (i.e., students who purchased SoUL) were collected at the time of distribution.
4. Lamp distributed to rural students via schools at INR 120/ lamp.
5. After-sales service was provided free-of-cost through SoUL Repair Centers (SRCs) established at village clusters.
6. Actuals may vary. Coordination includes local expenses such as rent, electricity, campaigning, local logistics, supervision, etc.

