

Vikramgarh Block, Palghar, Maharashtra

Students Benefited 12,507

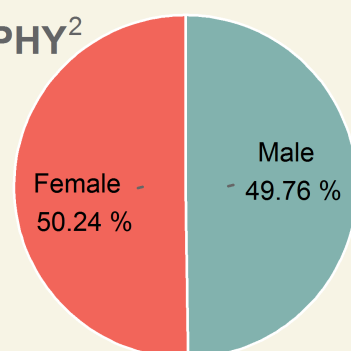
Saturation¹ 64.39%

Funded by Ministry of New and Renewable Energy
Sir Dorabji Tata Trust
Institutional Partner BAIF Development Research Foundation
Kits supplied by Thrive Solar Energy Pvt. Ltd.; Hyderabad
Lamps assembled at Aamrai Campus, Jawhar, Thane - 401603

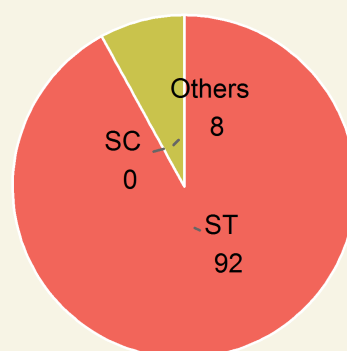


Area	Population	Rural Population	Villages	Schools
522.02 sq.km	1,37,625	95.65%	96	269

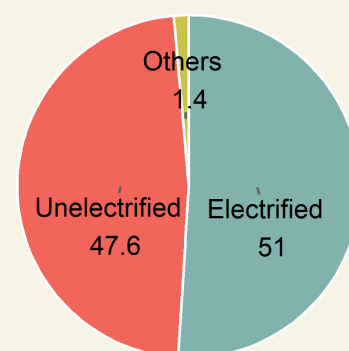
DEMOGRAPHY²



Gender

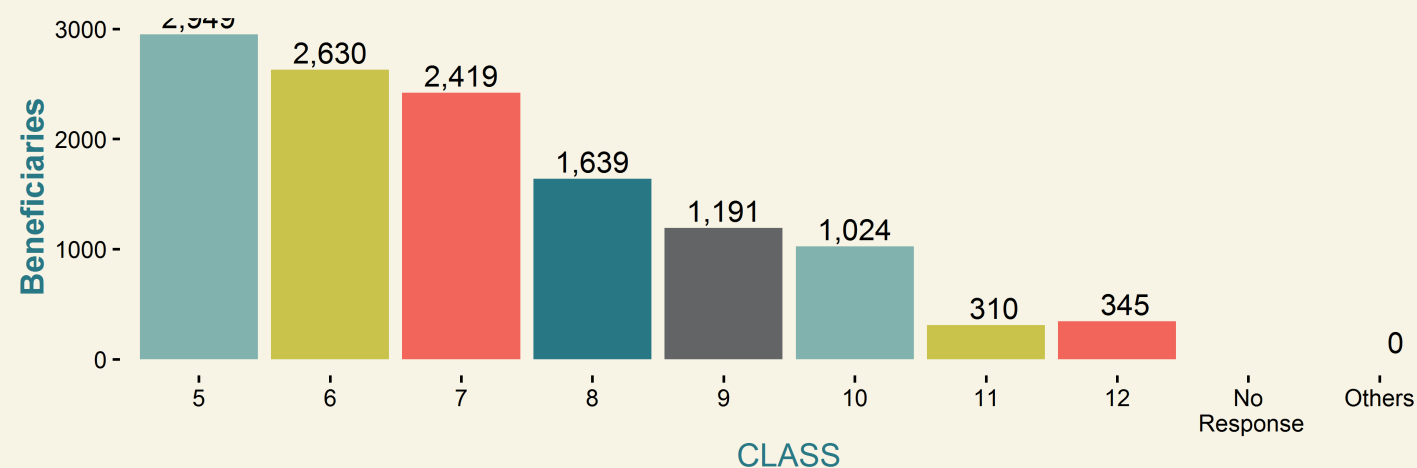
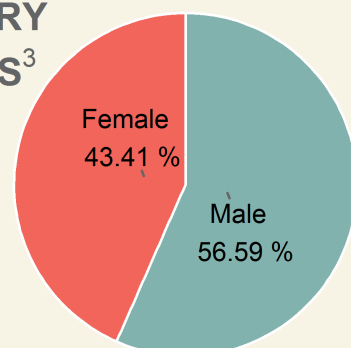


Category



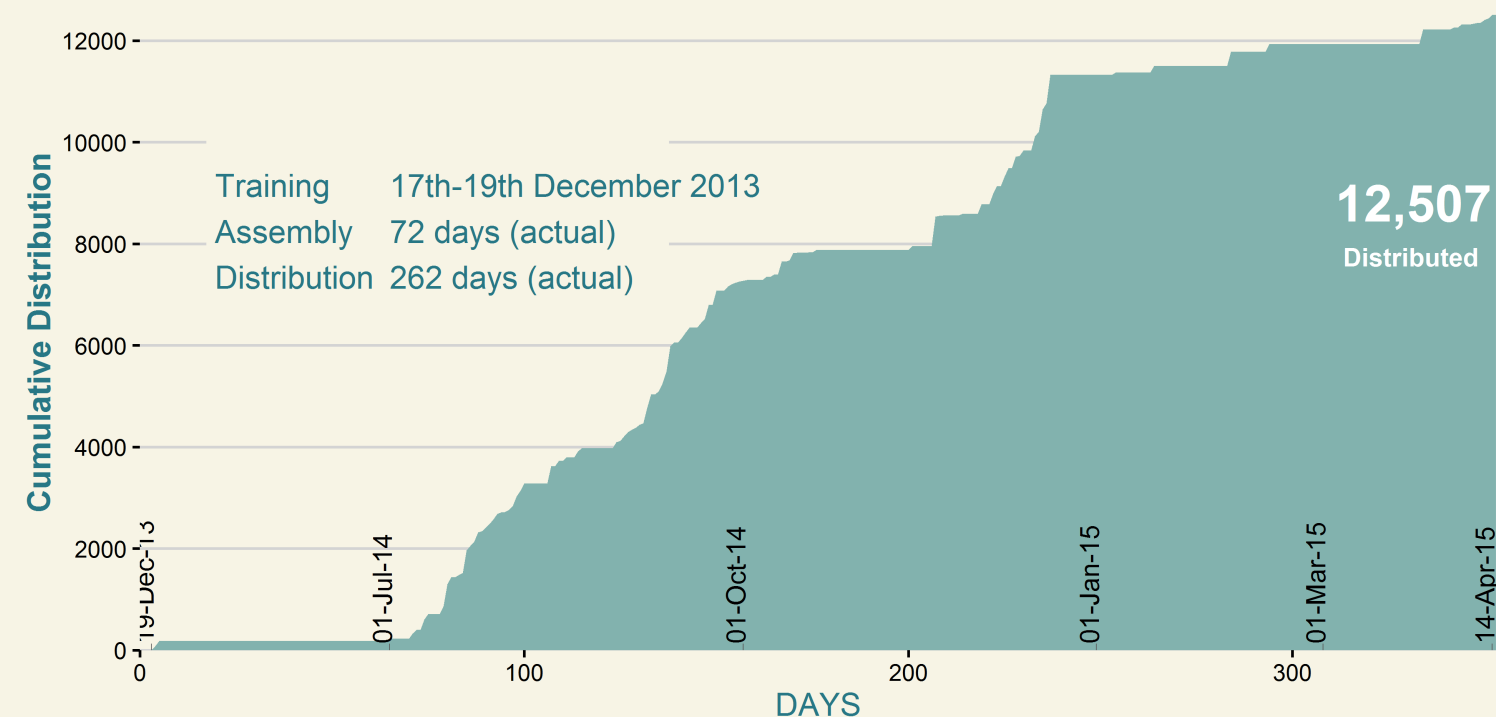
Household Electrification

BENEFICIARY STATISTICS³

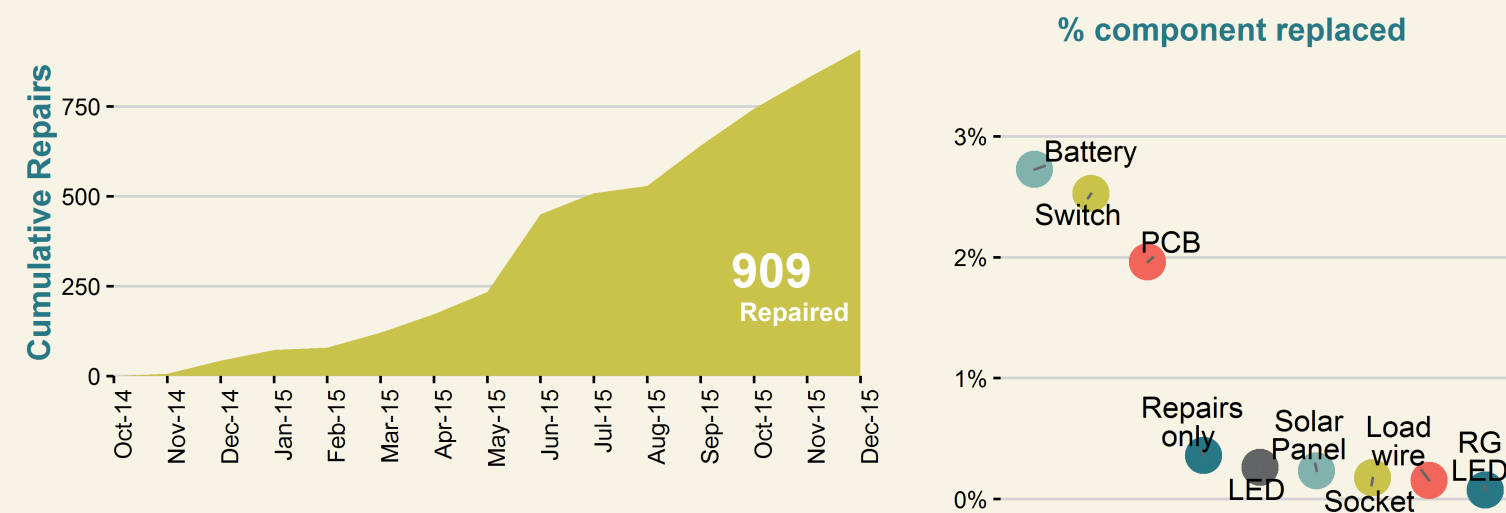


CLASS

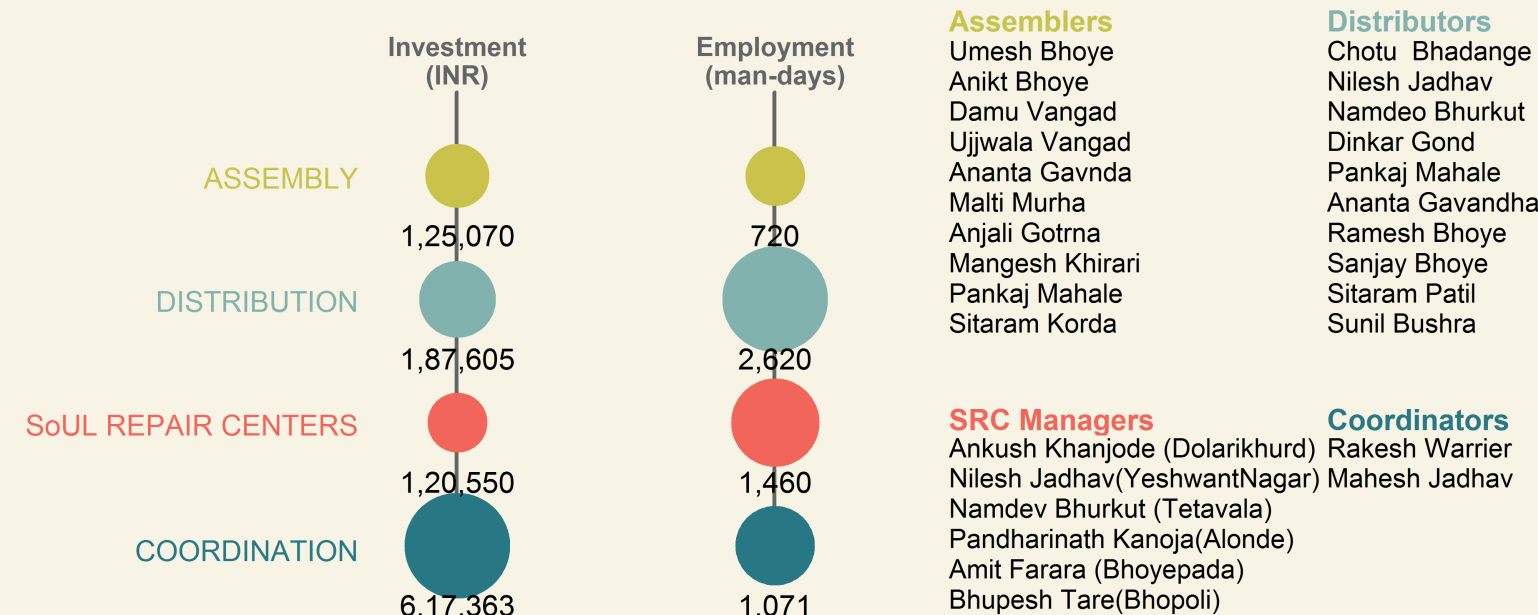
LAMP ASSEMBLY & DISTRIBUTION⁴



LAMP REPAIR & MAINTENANCE⁵



CONTRIBUTION TO LOCAL ECONOMY⁶



1. Saturation is the percentage of the block's rural school enrolment (5th-12th) benefited. (Enrolment data source: NUEPA)

2. Demography and other block details are obtained from Census of India 2011.

3. Beneficiaries details (i.e., students who purchased SoUL) were collected at the time of distribution.

4. Lamp distributed to rural students via schools at INR 120/ lamp.

5. After-sales service was provided free-of-cost through SoUL Repair Centers (SRCs) established at village clusters.

6. Actuals may vary. Coordination includes local expenses such as rent, electricity, campaigning, local logistics, supervision, etc.

